



INDOFINE Chemical Company, Inc.

121 Stryker Lane, Bldg. 30, Suite 1 • Hillsborough, NJ 08844 • U.S.A.

Phone: (908) 359-6778 • FAX: (908) 359-1179

website: www.indofinechemical.com

e-mail: chemical@indofinechemical.com

CERTIFICATE OF ANALYSIS

Catalog Number: 22-218

Product Name: **7,2',3'-TRIMETHOXYFLAVANONE**

Lot Number: 99067

Chemical Formula: C₁₈H₁₈O₅

Molecular Weight: 314.34

Melting Point: 93-96°C

Appearance: Pale yellow powder

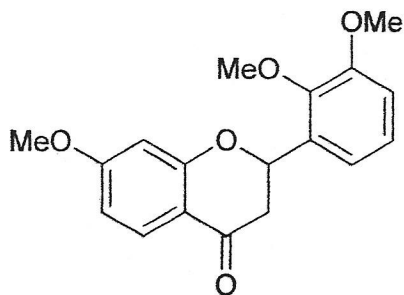
Solubility: Soluble in Chloroform

TLC: Hexane:Ethyl acetate (7:3)

NMR Spectrum: Enclosed (Conforms to the structure)

Storage: Store in a cool, dry place

Purity(HPLC): 98.38%





INDOFINE Chemical Company, Inc.

121 Stryker Lane, Bldg. 30, Suite 1 • Hillsborough, NJ 08844 • U.S.A.

Phone: (908) 359-6778 • FAX: (908) 359-1179

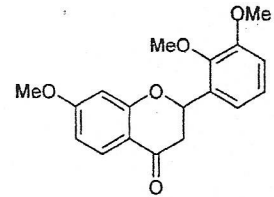
website: www.indofinechemical.com

e-mail: chemical@indofinechemical.com

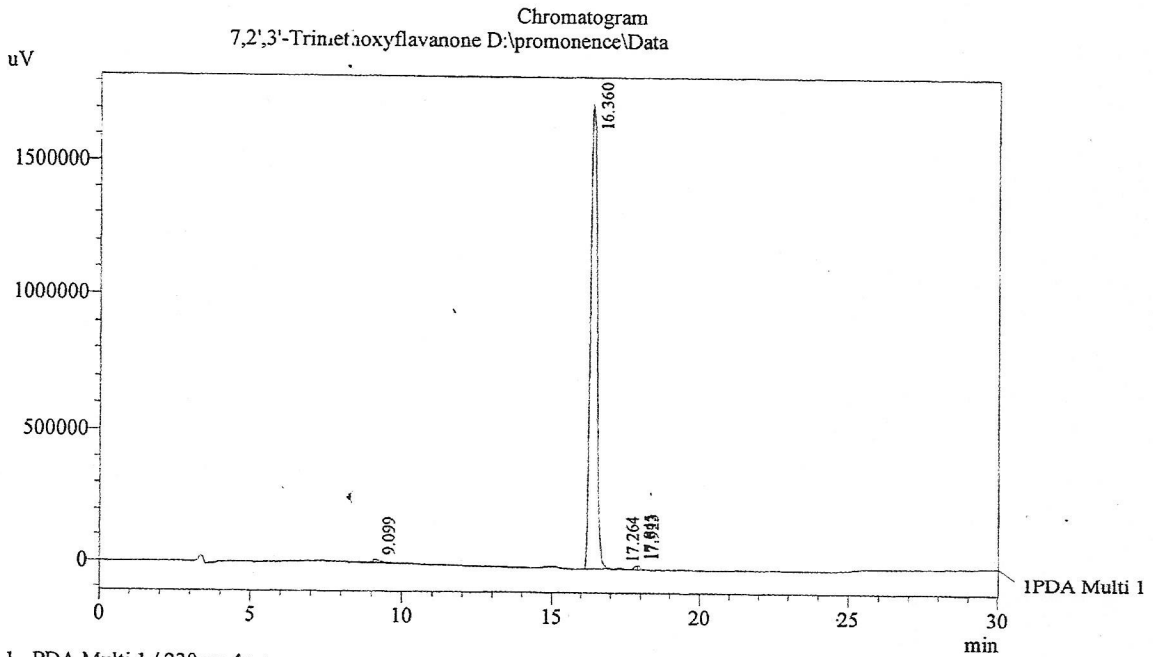
HPLC ANALYSIS

Acquired by : Sanjeev
 Sample Name : 7,2',3'-Trimethoxyflavanone
 Sample ID : Lot No: 99067
 Injection Volume : 20 uL
 Data Filename : 300813G.lcd
 Method Filename : Linear Gradient.M.lcm

Catalog No.: 22-218
 Product Name: 7,2',3'-Trimethylflavanone
 Lot No.: 99067



Column : LUNA C-18(2), (250mm x4.6mm 5.0µ)
 Flow : 1.000 mL/min.
 Mobile Phase : A(0.1% OPA in water) B(Acetonitrile)
 0.01 90 10
 12.0 10 90
 20.0 10 90
 23.0 90 10
 30.0 90 10
 Diluent : Acetonitrile



1 PDA Multi 1 / 230nm 4nm

PeakTable

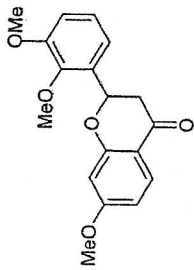
PDA Ch1 230nm 4nm

Peak#	Name	Ret. Time	Area	Area %	Relative Retention Time
1	RT:9.099	9.099	168146	0.61	0.56
2	7,2',3'-Trimethoxyflavanone	16.360	27301507	98.38	1.00
3	RT:17.264	17.264	60247	0.22	1.06
4	RT:17.845	17.845	111371	0.40	1.09
5	RT:17.923	17.923	109745	0.40	1.10
Total			27751016	100.00	



INDOFINE Chemical Company, Inc.
121 STRYKER LANE
BLDG. 30, SUITE 1
HILLSBOROUGH, NJ 08844

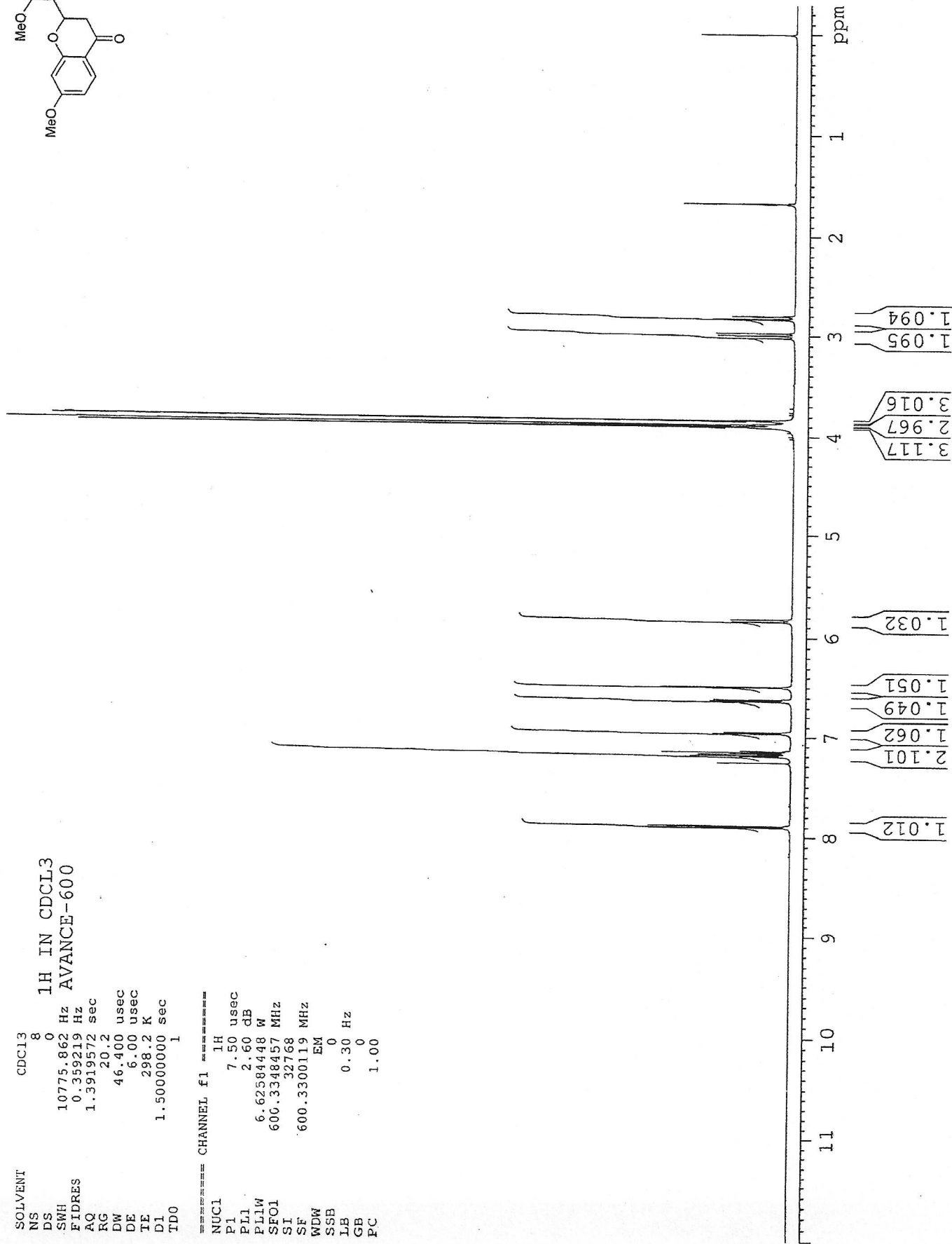
Catalog No.: 22-218
Product Name: 7,2',3'-Trimethylflavanone
Lot No.: 99067



SOLVENT CDCL3
NS 8
DS 0
SWH 10775.862 Hz
FIDRES 0.359219 Hz
AQ 1.3919572 sec
RG 20.2
DW 46.400 usec
DE 6.00 usec
TE 298.2 K
D1 1.50000000 sec
TDO 1

1H IN CDCL3
AVANCE-600

==== CHANNEL f1 =====
NUC1 1H
P1 7.50 usec
PL1 2.60 dB
PL1W 6.62584448 W
SF01 600.3348457 MHz
SI 32768
SF 600.3300119 MHz
WDW EM
SSB 0
LB 0.30 Hz
GB 0
PC 1.00



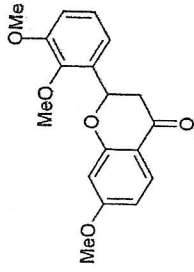


INDOFINE Chemical Company, Inc.
 121 STRYKER LANE
 BLDG. 30, SUITE 1
 HILLSBOROUGH, NJ 08844

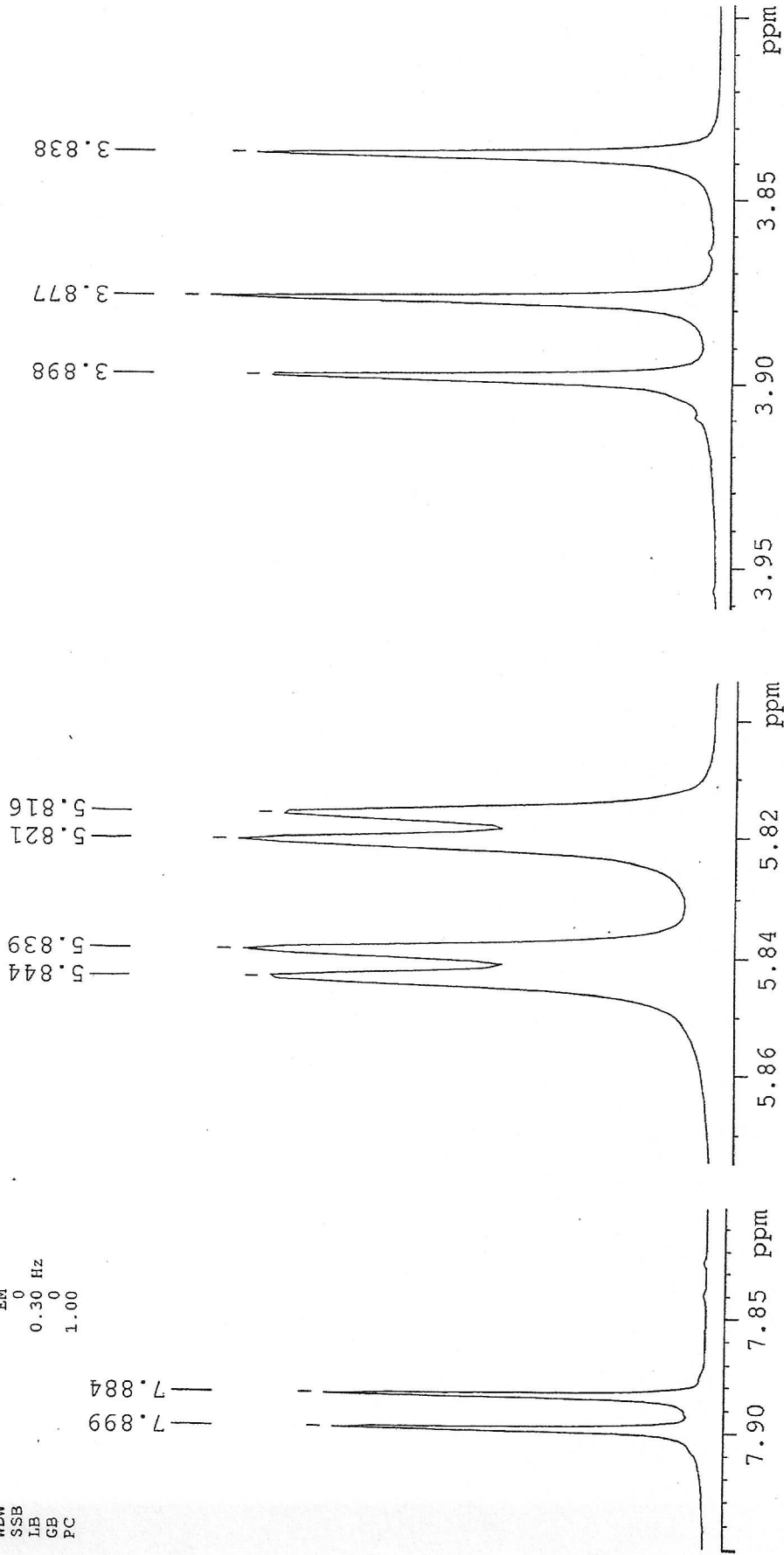
Catalog No.: 22-218
 Product Name: 7,2',3'-Trimethylflavanone
 Lot No.: 99067

SOLVENT CDCL3
 NS 8
 DS 0
 SWH 10775.862 Hz
 FIDRES 0.359219 Hz
 AQ 1.3919572 sec
 RG 20.2
 DW 46.400 usec
 DE 6.00 usec
 TE 298.2 K
 D1 1.50000000 sec
 TD0 1

1H IN CDCL3
 AVANCE-600



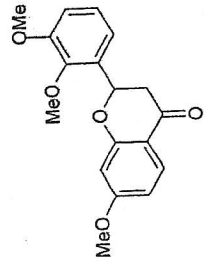
===== CHANNEL f1 =====
 NUC1 1H
 P1 7.50 usec
 P1L 2.60 dB
 P1LW 6.62584448 W
 SF01 600.3348457 MHz
 SF 32768
 SF 600.3300119 MHz
 WDW EM
 SSB 0
 LB 0.30 Hz
 GB 0
 PC 1.00





INDOFINE Chemical Company, Inc.
121 STRYKER LANE
BLDG. 30, SUITE 1
HILLSBOROUGH, NJ 08844

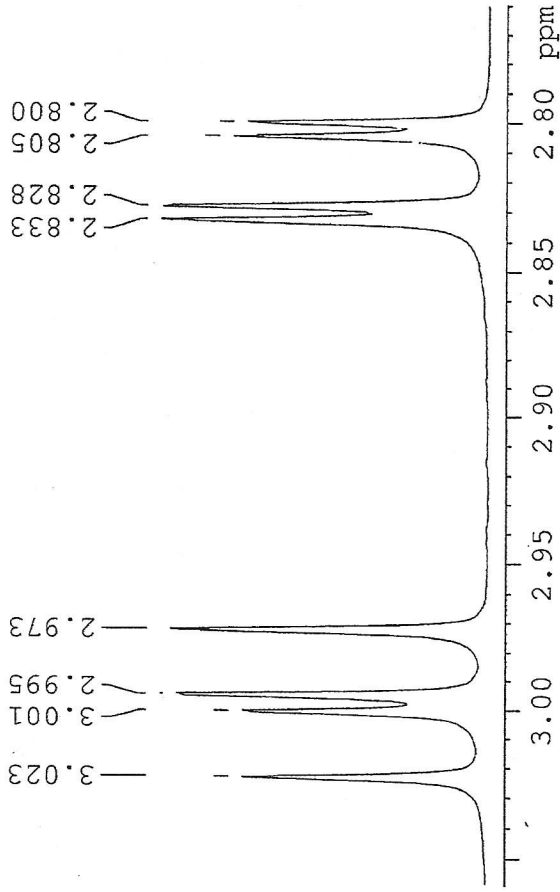
Catalog No.: 22-218
Product Name: 7,2',3'-Trimethylflavanone
Lot No.: 99067



SOLVENT CDCL3
NS 8
DS 0
SWH 10775.862 Hz
FIDRES 0.359219 Hz
AQ 1.3919572 sec
RG 20.2
DW 46.400 usec
DE 6.00 usec
TE 298.2 K
DL 1.50000000 sec
TDO 1

1H IN CDCL3
AVANCE-600

==== CHANNEL f1 =====
NUC1 1H
P1 7.50 usec
PL1 2.60 dB
PL1W 6.62584448 W
SF01 600.3348457 MHz
SI 32768
SF 600.3300119 MHz
WDW EM
SSB 0
LB 0.30 Hz
GB 0
PC 1.00



7.202
7.200
7.189
7.187
7.172
7.159
7.146

6.963
6.960
6.950
6.947

6.633
6.630
6.619
6.615

6.495
6.491

